

Volvo Amazon Model Range

I make no apologies for a repeat of this article, which has appeared many years ago. My intention is to give a guide to newer members who are not very familiar with the 120 range.

The car was introduced in 1957 in a 4 door saloon powered by the B16 engine. (1573 cc). The production took a while to gain its stride and then in 1961 the B18 engine was introduced (1786 cc) and at this stage the car was introduced to the UK market. The 2 door saloon was also introduced but was not imported to the UK until a 4 door saloon production finished. The estate car version came in 1962, then in 1967 the 2 door saloon appeared in the UK, This had been available in other markets prior to this but with the introduction of the 140 range in 1967 4 door saloons were discontinued.

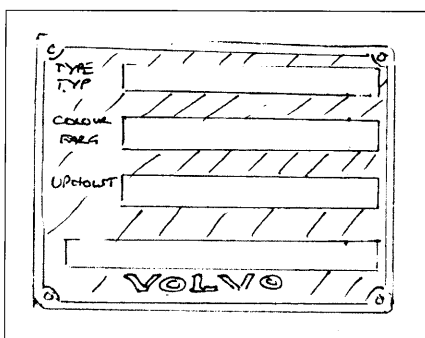
The B20 engine was introduced in 1968 (1986 cc). Production of estate cars finished in 1969 and the remaining 2 door saloons were discontinued in July 1970.

What causes the most confusion are the badges the cars show i.e 121, 122s and 123GT. Volvo have type numbers for each body style, 120 for 4 door saloons, 220 for estates and 130 for 2 door saloons. However estates and 2 door cars, do not have the badges 131 or 221 but the cars are badged as the 121, 122s and 123GT badges depending on the model and the type of engine fitted. To find the answer as to what an Amazon's real identity is you have to refer to the original type plate mounted on the brake and clutch pedal box in the engine compartment. On a black and silver plate under type (or typ in Swedish) there is a five figure number.

The first two figures relate to the body - 12 indicates a 4 door saloon 22 a 5 door estate and 13 a two door saloon. (this also includes the 123gt) The next figure relates to the engine 1 a single carburettor 2 a twin carburettor but 3 indicates a special as in the 123gt. (but not three carbs) Of course you can see a car with a 121 badge which has a twin carb engine, to check the engine is a proper twin carb one, also has to refer to the engine number. Of course this can be a transplant from another vehicle. The fourth figure is the specification 2 indicates a standard specification and 3 a special specification as in the 123GT. Other figures relate to USA Norway and Denmark specifications. The fifth figure relates

to the gearbox 1 = M30 3 speed standard vehicle, 2 = M30 s speed, 3 = M31 s speed plus overdrive, 4 = M40 4 speed, 5 M41 = 4 speed plus overdrive, 6 = Automatic transmission.

A sketch of the Type Plate followed by a listing of Type Designations from the Volvo Workshop manual are shown (thanks to Volvo Car Corp. for allowing reproduction).



120 Type Plate

Engine type	Number Type	Cam marking	Vehicles fitted to
4959	03	B16A	P12104
4959	95	B16A	P12106
4957	85	B16B	P12204/06
4959	96	B16B	P12208
4968	01	B18A-A	P12132/34 P 13121/34 P22134
4968	02	B18D A	P12234/35/38/44 P13234/35/38/44 P22244
4968	14	B18A A	P12136 P13136
4968	15	B18A A	P12236/46 P13246
4968	16	B18D A	P12244 P13244 P22244

4968	18	B18D A	P12236 P13244 P22244
4968	20	B18D B	P12234/35/38 P13135/44
4968	21	B18D B	P12244 P13244 P22244
4968	22	B18D B	P12236/46 P13246
4968	34	B18A A	P12194 P13191/94
4968	35	B18A A	P12136 P13136 P22136
4968	40	B18D B	P12234/38/44/94 P13234/44/94 P22234/44/94
4968	41	B18D B	P12246/96 P13246/96 P22246
4968	52	B18A A	P12134/38 P13121/34 P22134
4968	60	B18B C	P13335/95
4968	61	B18B C	P13335/94 P12394 P22394
4968	68	B18B C	P13344 P22344
4968	69	B18B C	P13346 P22346
4968	71	B18B C	P13334/94/96 P22334/36/44
4968	72	B18B C	P13396 P22336/46
4968	90	B18A A	SPARE ENGINES
4968	91	B18A A	SPARE ENGINES
4968	92	B18B C	SPARE ENGINES
4968	93	B18D B	SPARE ENGINES
4969	00	B20A A	P13134 P22134
4969	01	B20A A	P13134
4969	10	B20B C	P13334/44/94
4969	11	B20B	P13335/94

John Smith

Type designation	Model	With effect from	Chassis number	Engine	Gearbox	Rear axle	Remarks
P 1200	A	Oct. 1956	1-ca 5000	B 16 A	H 6	4.56:1	
P 1200	B	Febr. 1958	ca 5000-12082	B 16 A	M 4	4.56:1	
P 1204 06	B	Sept. 1958	12083-54399	B 16 A	M 4	4.56:1	
P 12204 06	B			B 16 B	M 4	4.56:1	
P 12132 33 34	D			B 16 A	M 30/31/40	4.56:1	
P 12234 35	D	Aug. 1960	54400-84299	B 16 B	M 40, 41	4.56:1	
12132 34	E			B 18 A	M 30/40	4.10:1	
12234 35	E	Aug. 1961	84300-112799	B 18 D	M 40/41	4.10/4.56:1	
12134	F			B 18 A	M 40	4.10:1	
12234	F	Aug. 1962	112800-139999	B 18 D	M 40/41	4.10:1	
12134 36	G	Aug. 1963	140000-166399	B 18 A	M 40 AV	4.10:1	
12134 36	K	Aug. 1964	166400-193799	B 18 A	M 40 AV	4.10:1	
12134 36	L	Aug. 1965	193800-225049	B 18 A	M 40 AV	4.10:1	
12235	L			B 18 D	M 41	4.56:1	
12-1341 61/2	M			B 18 A	M 40 AV	4.10:1	
12-2351 2	M	Aug. 1966	225050-	B 18 D	M 40	4.56:1	
13134	A	Oct. 1961	1-10499	B 18 A	M 40	4.10:1	
13132	B	Sept. 1962	10500-39999	B 18 A	M 30	4.10:1	
13234	B			B 18 D	M 40	4.10:1	
13134	D	Aug. 1963	40000-84599	B 18 A	M 40	4.10:1	
13235	D			B 18 D	M 41	4.56:1	
13134	E	Aug. 1964	84600-144399	B 18 A	M 40	4.10:1	
13235	E			B 18 D	M 41	4.56:1	
13134 36	F			B 18 A	M 40 AV	4.10:1	
13235	F	Aug. 1965	144400-216949	B 18 D	M 41	4.56:1	
13-1341 61/2	M			B 18 A	M 40 AV	4.10:1	
13-3351 2	M	Aug. 1966	216950-279899	B 18 B	M 41	4.56:1	
13-2351 2	M			B 18 D	M 41	4.56:1	
13-121	P			B 18 A	M 30	4.10:1	
13-134	P			B 18 A	M 40	4.10:1	
13-136	P			B 18 A	M 40	4.10:1	
13-334	P	Aug. 1967	279900-312499	B 18 B	BW 35	4.10:1	
13-335	P			B 18 B	M 41	4.56:1	
13-344	P			B 18 B	M 40	4.10:1	
13-346	P			B 18 B	BW 35	4.10:1	
13-134	S			B 20 A	M 40	4.10:1	
13-334	S	Aug. 1968	312500-339999	B 20 B	M 40	4.10:1	
13-134	S			B 20 B	M 40	4.10:1	
13-344	T	Aug. 1969	340000-	B 20 B	M 40	4.10:1	
22134	A	Febr. 1962	1-1399	B 18 A	M 40	4.55:1	
22134	B	Aug. 1962	1400-8274	B 18 A	M 40	4.55:1	
22134	D	Aug. 1963	8275-17949	B 18 A	M 40	4.55:1	
22134	E	Aug. 1964	17950-29399	B 18 A	M 40	4.55:1	
22234	F	Aug. 1965	29400-44599	B 18 A	M 40	4.55:1	
22-1341 2	M			B 18 D	M 40	4.55:1	
22-2341 2	M	Aug. 1966	44600-61799	B 18 A	M 40	4.55:1	
22-134	P			B 18 D	M 40	4.55:1	
22-334	P	Aug. 1967	61800-70299	B 18 B	M 40	4.56:1	
22-344	P			B 18 B	M 40	4.56:1	
22-346	P			B 18 B	M 40	4.56:1	
22-134	S	Aug. 1968	70300-	B 20 A	M 40	4.30:1	